
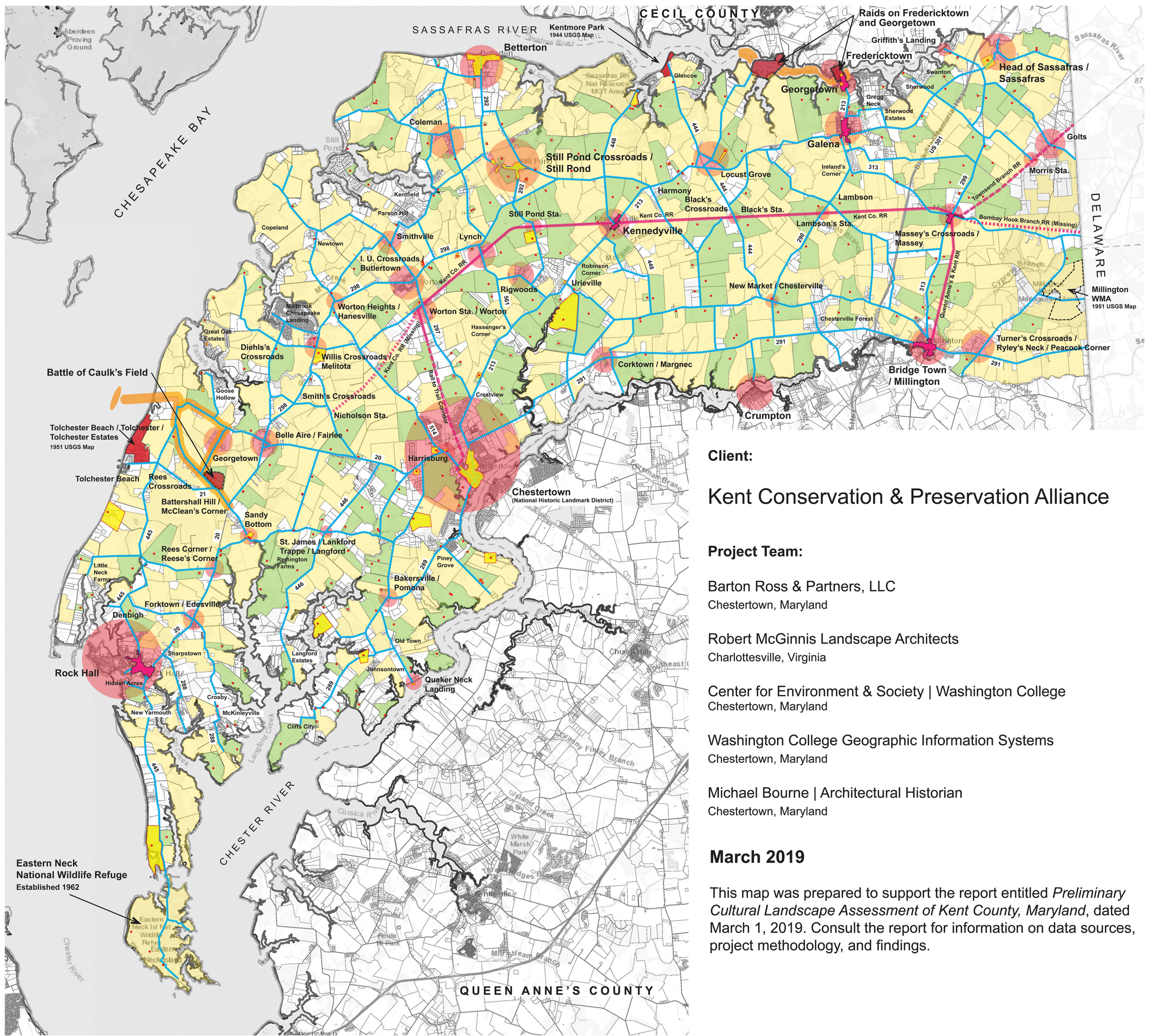


Legend:

-  **Historic Districts, Buildings, and Sites**
Listed on the National Register of Historic Places
-  **Historic Buildings, Structures, and Sites**
Listed on the Maryland Inventory of Historic Properties
-  **Historic Districts (Towns)**
Listed on the Maryland Inventory of Historic Properties
-  **Landscape Context (Parcels) of Historic Buildings, Structures, and Sites**
Listed on the Maryland Inventory of Historic Properties
-  **Continuity of Agriculture, Woodlands, and/or Open Space**
Large parcels
-  **Historic Roads and Road Corridors**
Based on comparing existing roads with roads mapped on 1860 and 1870 county maps
-  **Historic Kent & Queen Anne's Railroad Corridor**
Listed on the Maryland Inventory of Historic Properties
-  **War of 1812 Battlefields & Naval Engagements**
Core areas (combat)
-  **War of 1812 Battlefields & Naval Engagements**
Secondary areas (avenues of approach and retreat; maneuvering)
-  **Mid-20th-Century Residential Communities**
Found on USGS maps
-  **Historic Towns, Villages, Railroad Stops**
Named communities on 1860 and 1870 maps

NORTH

NOT TO SCALE



Client:
Kent Conservation & Preservation Alliance

Project Team:
Barton Ross & Partners, LLC
Chestertown, Maryland
Robert McGinnis Landscape Architects
Charlottesville, Virginia
Center for Environment & Society | Washington College
Chestertown, Maryland
Washington College Geographic Information Systems
Chestertown, Maryland
Michael Bourne | Architectural Historian
Chestertown, Maryland

March 2019
This map was prepared to support the report entitled *Preliminary Cultural Landscape Assessment of Kent County, Maryland*, dated March 1, 2019. Consult the report for information on data sources, project methodology, and findings.

CULTURAL LANDSCAPE ANALYSIS

Preliminary Cultural Landscape Assessment of Kent County, Maryland

Kent Conservation & Preservation Alliance